



POLY16 Plus and POLYFAST AZ

The compression fittings
that always seal



POLY16 Plus and POLYFAST AZ → Com

Georg Fischer compression fittings:
POLY16 Plus (d 75 – d 110) – with active sealing system including thrust ring and cushion-type seal.



POLY16 Plus

Once you have decided to use a plastic compression joint, the choice is clear. Our extensive range of POLY16 Plus fittings provide the perfect solution for a reliable pipe connection. The fittings are removable joints which means they can be reused.

d 16 – d 110

PN 16 bar (at 20°C water)

d 20 – d 32

PN 20 bar (at 20°C water) possible

Transition fittings

with metal thread in red brass

Complementary to the POLY16 Plus product range, these fittings make ideal transitions to metal components.

d 20 – d 63

PN 16 bar (at 20°C water)

plete. Easy. → Active sealing system. → Safe. Tight.



Georg Fischer compression fittings: POLY16 Plus (up to d 63) and POLYFAST AZ – with active sealing system including thrust ring and double lip seal.



Branch saddles

Clamp saddles from d 20 to d 315 together with the special seals enable safe connections even with different pipe materials.

d 20 – d 315

d 20 – d 160 PN 16 bar (at 20 °C water)

d 180 – d 315 PN 10 bar (at 20 °C water) in preparation

POLYFAST AZ

Based on the proven POLY16 Plus technology, this line of fittings offers a viable alternative for lower pressures and less demanding applications.

d 16 – d 110

PN 10 bar (at 20 °C water)

POLY16 Plus/ POLYFAST AZ

thanks to the active sealing system

- safe and removable connectors
- easy to assemble
 - loosen nut
 - insert pipe
 - tighten nut
 - finished

POLY16 Plus compression joints → robust

Perfected over decades of performance.

The double lip seal (up to d 63) and cushion-type seal (from d 75) for added safety and easier installation.



2

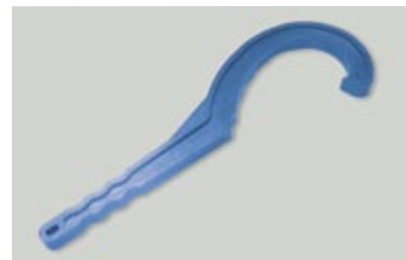
- 1a Double lip seal (up to d 63) with a load-conform profile for easy installation and maximum safety
- 1b Cushion-type seal (from d 75) enables simple installation and maximum safety
- 2 Exploded view of POLY16 Plus tee
- 3 Transition couplings with metal thread permit integrating metal components, such as water meters, without difficulty into plastic piping systems
- 4 POLY16 Plus also with adapter kits for use on PVC, ABS, PE-Xa and copper pipes
- 5 Transition coupling with metal part made of red brass
- 6 Installation wrench for easy tightening and loosening

The compression fitting can be used on all PE pipes, as well as for PVC, ABS, PP, PE-Xa and copper pipes.

Installation is fast and easy. No dismantling is required, so the pipe can simply be inserted. Thanks to the cushion-type seal for d 75–d 110, this installation step is foolproof for the larger dimensions as well. All the materials of the housing, coupling nut, backing ring, compression ring and seals conform to the current regulations for drinking water conveyance.

The extremely robust design renders this compression joint ideal even under difficult on-site conditions.

The two installation wrenches (d 32–d 63 and d 75–d 110) make it possible to tighten and loosen the coupling nuts quickly and easily.



6



1a



1b



3

4

The POLY16 Plus compression joints have been approved for water applications according to all the prevalent standards (IIP, DVGW, SVGW, KIWA, NSF, WIS, QAS, Byggforsk, SITAC, STF, etc.).

Transitions to metal - no problem

Transitions from plastic pipes to metal components are a necessity in practically every piping system. Here, a reliable connection is extremely important, as is a fast and easy installation even under cramped working conditions.

The large hexagon flats enable connecting the POLY16 Plus metal transitions quickly and precisely to a water meter, a valve or a pump.

The positive-fit connection between metal thread and plastic fitting is such an effective transition that additional O-ring seals are not required.

The metal parts are made of red brass which complies with the most stringent specifications in drinking water approvals.

Your benefits

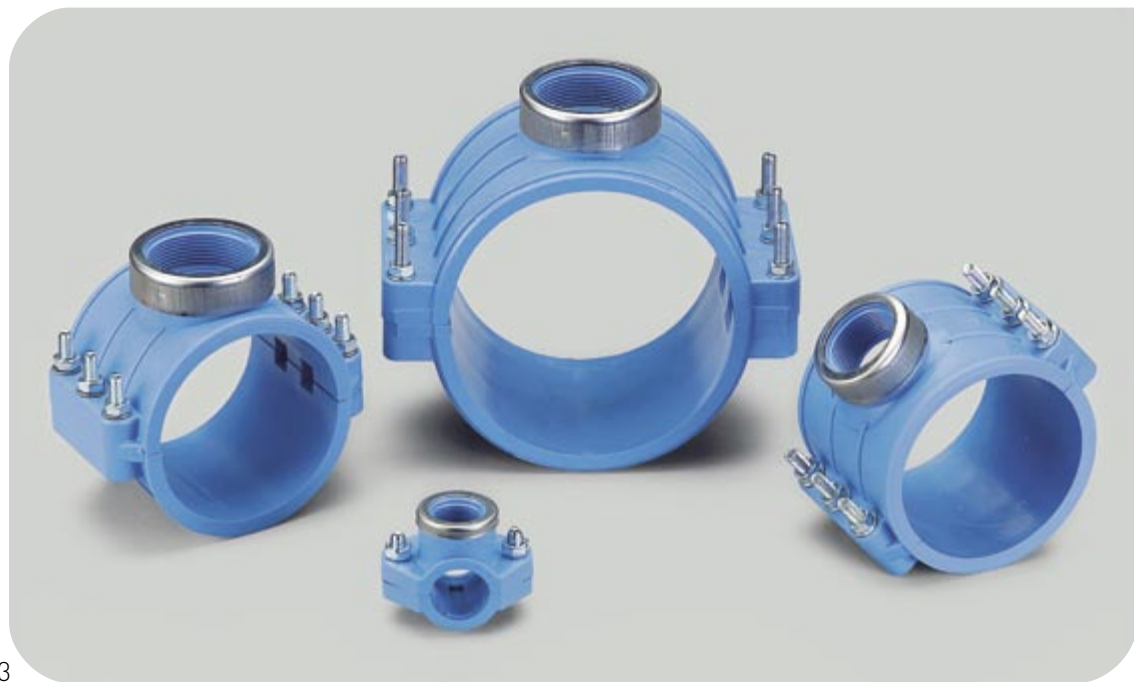
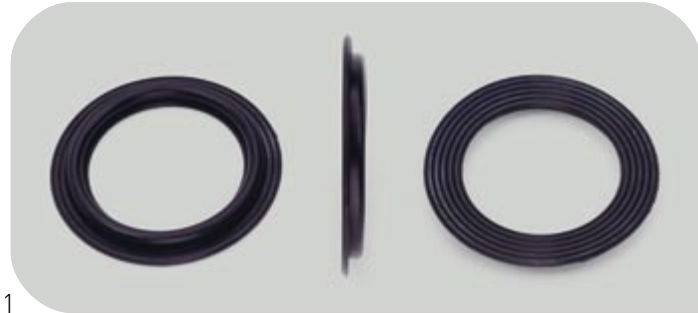
- Easy installation even in tight spaces, without dismantling the fitting
- Easy pipe insertion due to tapered and pre-lubricated double lip seal up to d 63 and cushion-type seal from d 75 – d 110
- Also suitable for use in wet or damp environments
- Active sealing system consisting of double lip seal (up to d 63), cushion-type seal (from d 75) and thrust ring warrant a safe connection even with oval or scratched pipes, as well as for vacuum and suction lines
- Also with adapter kits for use with copper, PVC, ABS and PE-Xa pipes
- Special seals that make sliding repair couplings on extra easy (without pipe stop)

Transition coupling with metal thread:

- Conventional tools can be used without difficulty due to the wide metal hexagon flats
- Broad range of couplings with male or female thread, as well as 90° elbows with male thread
- Metal (red brass) is approved for drinking water applications
- Positive-fit connection between metal insert and plastic body (injection-molded dovetail) without additional sealing elements

Branch saddles → universal

Proven technology.
Economical.



- 1 Special profile gasket for maximum safety in branch saddles
- 2 Fit of the profile gasket in the branch saddle
- 3 Product selection from the saddle range d20 – d315
- 4 Clampable connecting elements used effectively
- 5 Branch saddles with stainless steel reinforcement ring, stainless steel bolts and washers

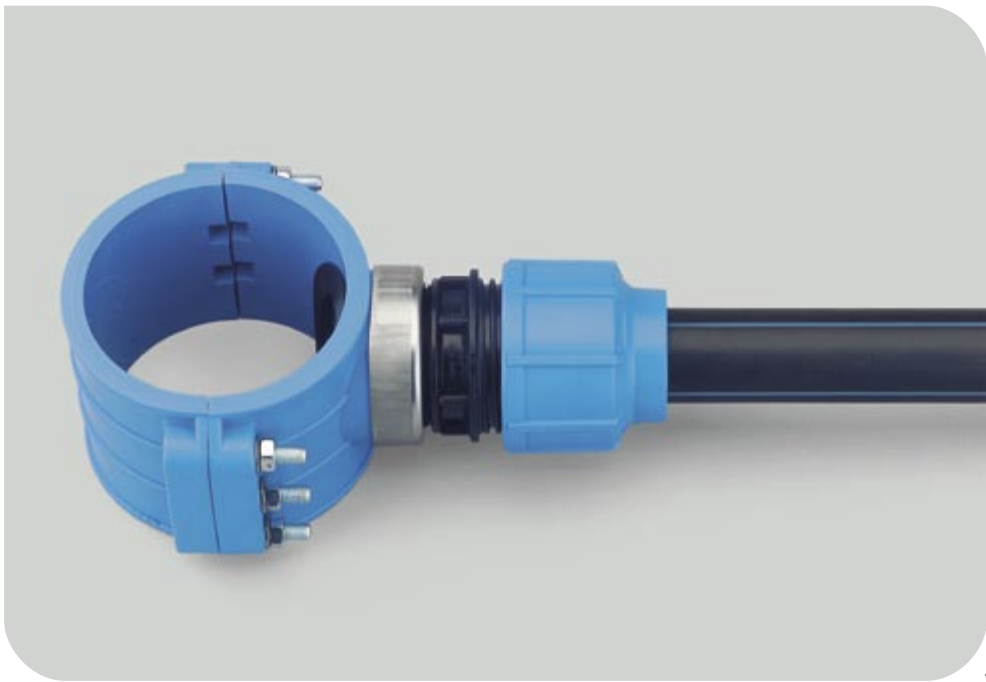
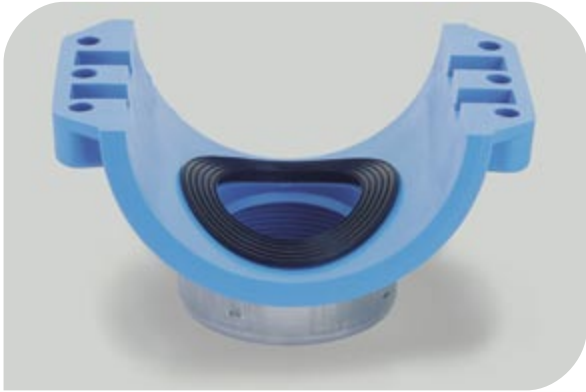
Branch saddles

The compression branch saddle range of products from Georg Fischer covers a broad spectrum of dimensions from d20 – d315.

These branch saddles can easily be used on all metric pipes. They meet all the typical requirements in the various dimensional ranges.

The strength of the joint lies in the specially developed profile gasket. It offers more safety even in case of water hammer, oval or scratched pipes. The sturdy construction with reinforcing ribs has been designed for use under the harshest on-site conditions. The extra long, stainless steel reinforcement ring in the outlet branch prevents cracking, even with high torques.

The working pressures for the branch saddles are 16 bar (at 20°C water) for up to d 160 and projected 10 bar (at 20°C water) for up to d315.



Your benefits

- Wide range of products
- Profile gasket for more safety – especially with water hammer
- Suitable for conveying drinking water
- Installation also in wet or damp environments
- Stainless steel ring in outlet
- Sturdy construction with reinforcing ribs
- Branch saddles from d 110 are supplied with 6 fastening bolts, permitting optimal distribution of force
- The bottom half of the bracket features cams to retain the bolts, preventing them from falling out during assembly
- Standard bolts are manufactured of stainless steel (A2). The complete bracket is therefore extremely resistant to corrosion.

Global presence



The technical data is not binding and not an expressly warranted characteristic of the goods. It is subject to change. Please consult our General Conditions of Supply.

Australia

George Fischer Pty Ltd
Kingsgrove NSW 2008
Phone +61(0)2/95 54 39 77
sales@georgfischer.com.au
www.georgfischer.com.au

Austria

Georg Fischer
Rohrleitungssysteme GmbH
3130 Herzogenburg
Phone +43(0)2782/856 43-0
office@georgfischer.at
www.georgfischer.at

Belgium/Luxembourg

Georg Fischer NV/SA
1070 Bruxelles/Brüssel
Phone +32(0)2/556 40 20
info.be@be.piping.georgfischer.com
www.georgfischer.be

Brazil

George Fischer Ltda
04795-100 São Paulo
Phone +55(0)11/5687 1311

China

Georg Fischer Piping Systems Ltd Shanghai
Pudong, Shanghai 201319
Phone +86(0)21/58 13 33 33
info@cn.piping.georgfischer.com
www.cn.piping.georgfischer.com

Denmark/Iceland

Georg Fischer A/S
2630 Taastrup
Phone +45 (0)70 22 19 75
info@dk.piping.georgfischer.com
www.georgfischer.dk

France

Georg Fischer S.A.S.
93208 Saint-Denis Cedex 1
Phone +33(0)1/492 21 34 1
info@georgfischer.fr
www.georgfischer.fr

Germany

Georg Fischer GmbH
73095 Albershausen
Phone +49(0)7161/302-0
info@georgfischer.de
www.rls.georgfischer.de

Georg Fischer DEKA GmbH
35232 Dautphetal-Mornshausen
Phone +49(0)6468/915-0
info@dekapipe.de
www.dekapipe.de

Greece

Georg Fischer S.p.A.
10434 Athens
Phone +30(0)1/882 04 91
office@piping-georgfischer.gr

India

George Fischer Piping Systems Ltd
400 093 Mumbai
Phone +91(0)22/2820 2362
branchoffice@georgfischer.net

Italy

Georg Fischer S.p.A.
20063 Cernusco S/N (MI)
Phone +3902/921 861
office@piping.georgfischer.it
www.georgfischer.it

Japan

Georg Fischer Ltd
556-0011 Osaka,
Phone +81(0)6/6635 2691
info@georgfischer.jp
www.georgfischer.jp

Malaysia

Georg Fischer (M) Sdn. Bhd.
47500 Subang Jaya
Phone +60 (0)3-8024 7879
conne.kong@georgfischer.com.my

Netherlands

Georg Fischer N.V.
8161 PA Epe
Phone +31(0)578/678 222
info.vgn@nl.piping.georgfischer.com
www.georgfischer.nl

Norway

Georg Fischer AS
1351 Rud
Phone +47(0)67 18 29 00
info@no.piping.georgfischer.com
www.georgfischer.no

Poland

Georg Fischer Sp. z o.o.
02-226 Warszawa
Phone +48(0)22/313 10 50
www.georgfischer.pl

Romania

Georg Fischer
Rohrleitungssysteme AG
70000 Bucharest - Sector 1
Phone +40(0)1/222 91 36
office@georgfischer.ro

Singapore

George Fischer Pte Ltd
417 845 Singapore
Phone +65(0)67 47 06 11
info@georgfischer.com.sg
www.georgfischer.com.sg

Spain/Portugal

Georg Fischer S.A.
28009 Madrid
Phone +34(0)91/781 98 90
info@georgfischer.es
www.georgfischer.es

Sweden/Finland

Georg Fischer AB
12523 Älvsjö-Stockholm
Phone +46(0)8/506 775 00
info@georgfischer.se
www.georgfischer.se

Switzerland

Georg Fischer Rohrleitungssysteme (Schweiz) AG
8201 Schaffhausen
Phone +41(0)52 631 30 26
info@rohrleitungssysteme.georgfischer.ch
www.piping.georgfischer.ch

United Kingdom/Ireland

Georg Fischer Sales Limited
Coventry, CV2 2ST
Phone +44(0)2476 535 535
info@georgfischer.co.uk
www.georgfischer.co.uk

USA/Canada/Latin America/Caribbean

George Fischer Inc.
Tustin, CA 92780-7258
Phone +1(714) 731 88 00, Toll Free 800/854 40 90
info@us.piping.georgfischer.com
www.us.piping.georgfischer.com

Export

Georg Fischer Rohrleitungssysteme (Schweiz) AG
8201 Schaffhausen
Phone +41(0)52 631 11 11
export@piping.georgfischer.com
www.piping.georgfischer.com